

FEATURES

- > Excellent aspiration performance
- > Valve system optimized for gas/liquid mixtures
- > High efficiency
- > Excellent reliability and durability even with corrosive and abrasive media
- > Flexible design for customized solutions

TYPICAL APPLICATIONS

- > In-vitro diagnostics
- > Inkjet printers
- > Condensate removal

BASE MODEL

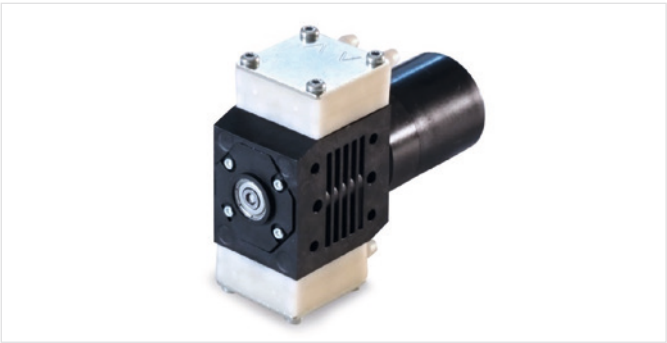
6323 BLDC HP



Diaphragm

Diaphragm Liquid Pump 6323 BLDC HP

Max. liquid flow	1.750 ml/min
Max. gas flow	5.0 l/min
Pressure height (liquid)	1.000 mbar (rel.)
Final vacuum (gas)	-700 mbar (rel.)



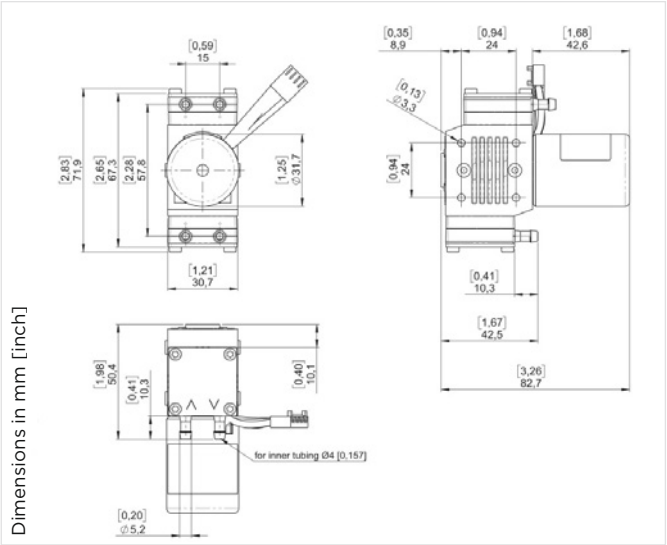
HYDRAULIC DATA	
Max. flow [l/min]	1.750 (EPDM) / 1.550 (PTFE)
Max. cont. pressure [mbar rel.]	1.000
Max. suction height [mbar rel.]	-700

PNEUMATIC DATA	
Max. flow [l/min]	5.0 (EPDM) / 3.1 (PTFE)
Max. cont. pressure [mbar rel.]	1.100
Max. vacuum [mbar rel.]	-700

OPERATING CONDITIONS	
Media temperature (liquid) [°C]	5 to 80
Ambient temperature [°C]	5 to 40
Storage temperature [°C]	-30 to +70

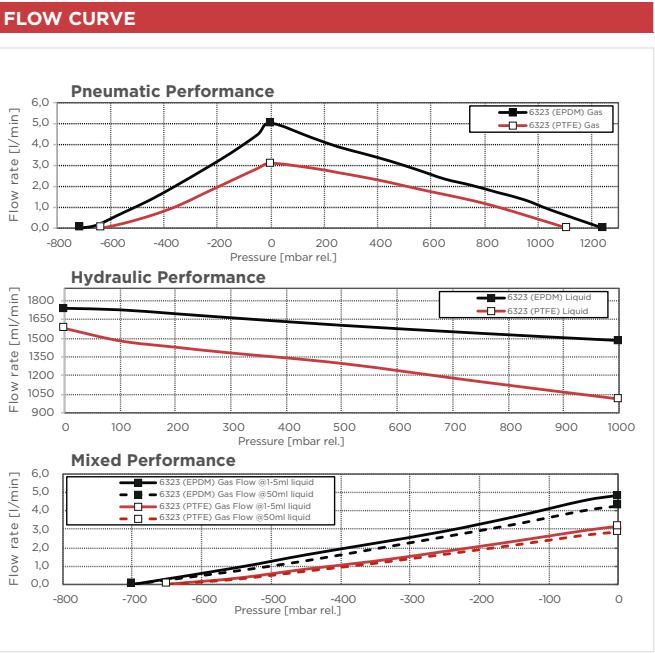
PHYSICAL DATA	
Dimensions l x w x h [mm]	83 x 31 x 72
Weight [g]	217
Mounting on side [mm]	Through hole Ø 3.3

DIMENSIONAL DRAWING	
---------------------	--



Dimensions in mm [inch]

for inner tubing Ø4 (0.157)



ELECTRICAL DATA*	
Motor type	Brushless DC
Nominal voltage	12 / 24 V DC
Max. power consumption [W]	16.8 (liquid operation)
Insulation class	A
Protection class	IP 20
Drive electronics	Integrated

*Please refer to the wiring diagram on page 3.

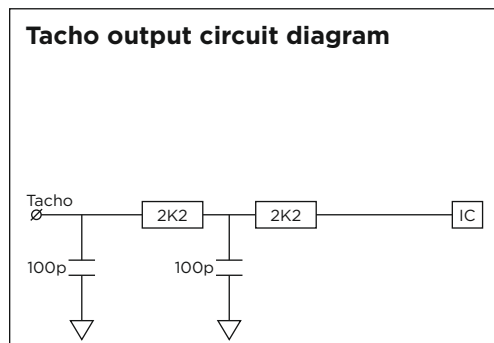
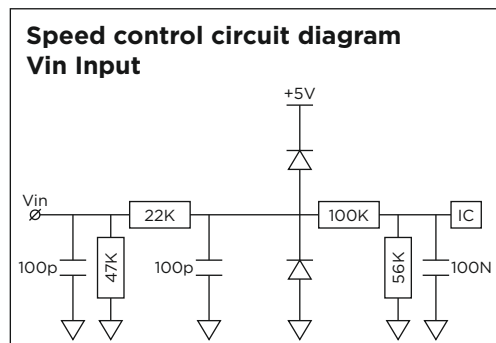
MODEL KEY		
6323 - F - O - DD - 24V - BLDC HP - 4600 - 13 - EEE - PP - HB		
Pos	Options	Description
1	6323	Product Line
2	F	Fluid operation
3	O	Tubing: no tubing included
4	A / B / C / D	Port position: standard D over motor
5	12V / 24V	Nominal voltage
6	BLDC HP	Motor: BLDC High Performance
7	4600	Nominal motor speed (motor dependent)
8	10 / 13	Eccentric: e.g. 13 → 1.3 mm
9	EEE / PFF	Diaphragm, valve/sealing: EPDM/PTFE/FFKM
10	PP	Pump head material: Polypropylene
11	HB / DN	Hose Barbs / DN 4/6 compression fittings

ORDER INFORMATION	
Part Number	Model Key
63230006	6323-F-O-DD-24V-BLDC HP-4600-13-EEE-PP-HB
63230008	6323-F-O-DD-24V-BLDC HP-4600-10-PFF-PP-HB
63230016	6323-F-O-DD-24V-BLDC HP-4600-13-EEE-PP-DN
63230018	6323-F-O-DD-24V-BLDC HP-4600-10-PFF-PP-DN
63230106	6323-F-O-DD-12V-BLDC HP-4600-13-EEE-PP-HB
63230108	6323-F-O-DD-12V-BLDC HP-4600-10-PFF-PP-HB
63230116	6323-F-O-DD-12V-BLDC HP-4600-13-EEE-PP-DN
63230118	6323-F-O-DD-12V-BLDC HP-4600-10-PFF-PP-DN
Other Configurations	Upon Request

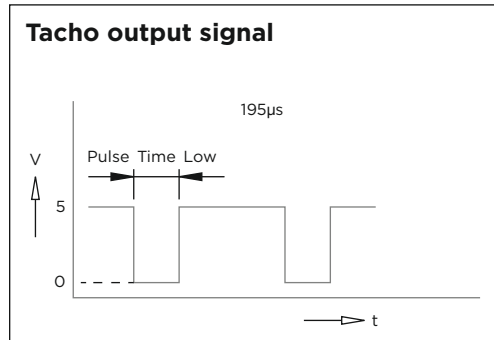
The information presented in this Datasheet is based on technical data and test results of nominal units. It is believed to be accurate and reliable and is offered as an aid to help in the selection of Thomas products. It is the responsibility of the user to determine the suitability of the product for the intended use and the user assumes all risk and liability whatsoever in connection therewith. Thomas does not warrant, guarantee or assume any obligation or liability in connection with this information.

Wiring diagram (BLDC High Performance)

	Function	Colour	Control
Pin 1	V Supply	Red	12 V DC (max. voltage range: 10..18 V DC) 24 V DC (max. voltage range: 10..28 V DC)
Pin 2	Ground	Black	Ground for Vsupply (PIN 1) and Speed Control (PIN 3)
Pin 3	Speed Control	White	analog: 0..5 V DC PWM: 6..20kHz - 14..96% Speed voltage input threshold: 0.2 V
Pin 4	Tacho out	Green	18 pulses per revolution Pulse time „LOW“: 195 μ s Output level „LOW“: 0 / max. 0.5 V Output level „HIGH“: min. 4 V / max. 5 V



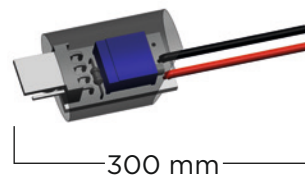
Optional: Adapter for 2-wire duty
incl. potentiometer for
speed adjustment



Options / Accessories

P/N 29011932 **Adapter for BLDC motor**
4-2 wire w/ manual speed control
12 V DC "red"

P/N 29011933 **Adapter for BLDC motor**
4-2 wire w/ manual speed control
24 V DC "black"



PUMP AND COMPRESSOR SOLUTIONS FOR OEMS WORLDWIDE

thomaspumps.com



Gardner Denver Thomas GmbH

Livry-Gargan-Str. 10
82256 Fürstenfeldbruck
Germany
T +49 8141 2280 0
F +49 8141 8892136
thomas.de@irco.com

Gardner Denver Thomas. Inc.

1419 Illinois Avenue
Sheboygan. WI 53081
USA
T +1 920 4574891
F +1 920 4514276
td.usa@irco.com

Gardner Denver Thomas Pneumatic Systems (Wuxi) Co., Ltd.

No. 1 New Dong An Road, Shuofang Town, Wuxi, Xinwu District
Jiangsu 214142
China
T +86 510 6878 2258
F +86 510 6878 2200
thomas.cn@irco.com



The information presented in this material is based on technical data and test results of nominal units. It is believed to be accurate and reliable and is offered as an aid to help in the selection of Thomas products. It is the responsibility of the user to determine the suitability of the product for the intended use and the user assumes all risk and liability in connection therewith. Thomas does not warrant, guarantee or assume any obligation or liability in connection with this information.

Models presented in this catalog are representative of the product family. Photos of products pictured in this catalog do not necessarily represent a specific model number. To obtain further information for custom options, contact your local Thomas office.

Printed in Germany Form No. 17006323 01/2025 © Gardner Denver Thomas GmbH. All rights reserved.