

FEATURES

- > Linear controllability of flow against pressure
- > Pump components are specially designed for maximum lifetime performance, even with higher pressures
- > Full compatibility with corrosive and abrasive media
- > Flexible design for customized solutions

TYPICAL APPLICATIONS

- > Continuous Inkjet (CIJ)
- > Drop-on-Demand Inkjet (DOD)
- > In-vitro diagnostic analysis machines

BASE MODEL

6311



Diaphragm

Diaphragm Liquid Pump 6311

Flow	190 ml/min
Pressure height	40 m H ₂ O
Suction height	3 m H ₂ O

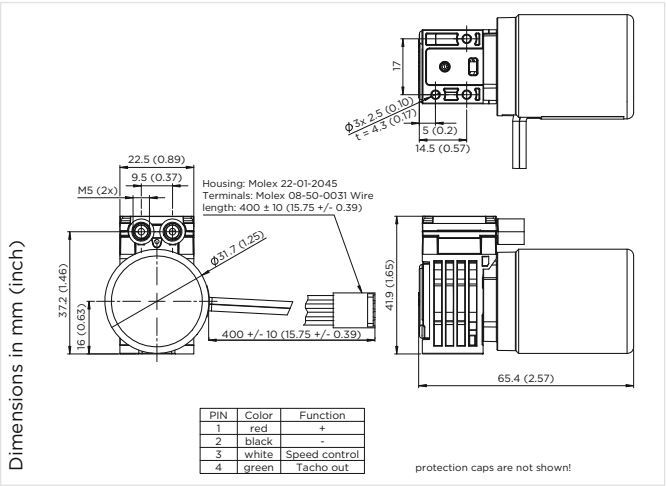
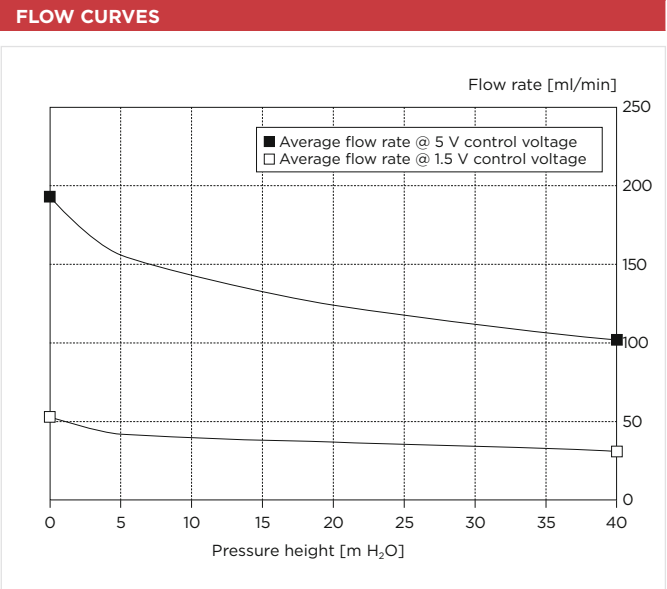


HYDRAULIC DATA		
Description	6311 BLDC HP PP/EPDM/EPDM	
Part number	12 V DC	6311 0001
	24 V DC	6311 0002
Free flow	190 ml/min	
Max. continuous pressure height	40 m H ₂ O	
Max. suction height	3 m H ₂ O	

ELECTRICAL DATA		
Motor type	Brushless DC	
Nominal speed @ 10 m H ₂ O	2800 rpm	
Nominal voltage	24 V DC	
Max. nominal power consumption @ 40 m H ₂ O	2.8 W	
Motor insulation class	B	
Protection class	IP54	
EMC protection	Yes	
Connector	Housing	Molex KK 22-01-2045
	Terminal	Molex KK 08-50-0031

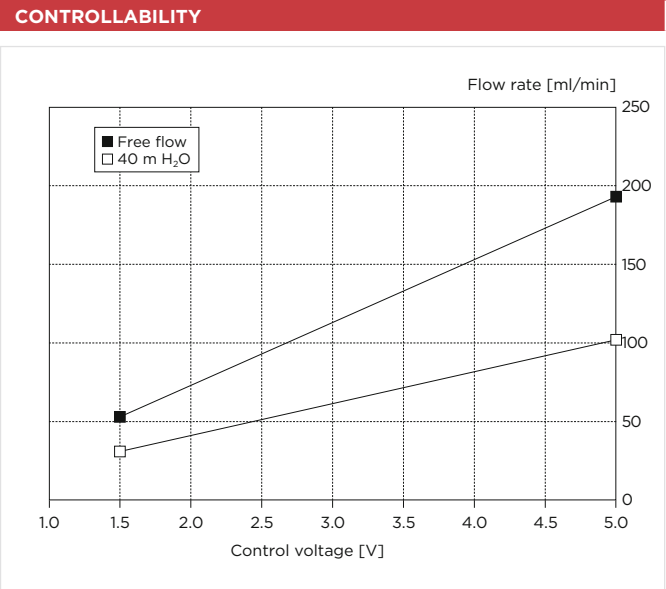
GENERAL DATA	
Ambient temperature	15 to 40 °C
Media temperature	5 to 55 °C
Weight	130 g
Pneumatic connection	thread size M5

The technical data is based on the use of PTFE measuring tubes Shore D 55, 6 x 1 mm (O.D. x wall thickness), 65 cm length / 8 x 1 mm, 15 cm length / 6 x 1 mm, 10 cm length. The use of a different tubing will change the flow.



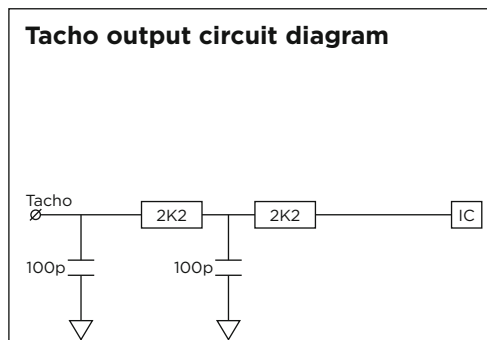
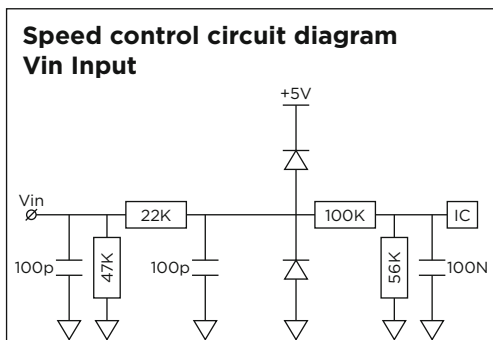
WETTED PARTS	
Pump head	PPS
Diaphragm	EPDM
Valve plate	EPDM
Resonating diaphragm	EPDM

Please refer to the wiring diagram on page 3.

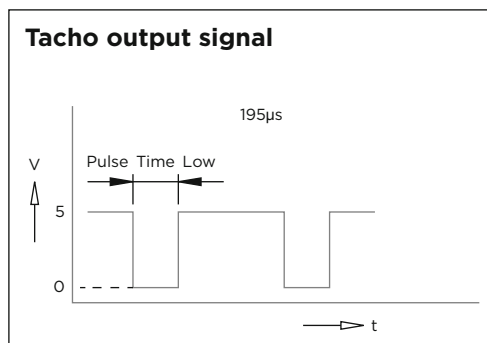


Wiring diagram (BLDC High Performance)

	Function	Colour	Control
Pin 1	V Supply	Red	12 V DC (max. voltage range: 10..18 V DC) 24 V DC (max. voltage range: 10..28 V DC)
Pin 2	Ground	Black	Ground for Vsupply (PIN 1) and Speed Control (PIN 3)
Pin 3	Speed Control	White	analog: 0..5 V DC PWM: 6..20kHz - 14..96% Speed voltage input threshold: 0.2 V
Pin 4	Tacho out	Green	18 pulses per revolution Pulse time „LOW“: 195 μ s Output level „LOW“: 0 / max. 0.5 V Output level „HIGH“: min. 4 V / max. 5 V



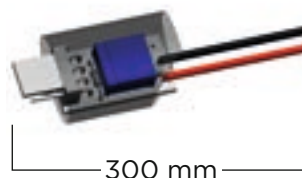
Optional: Adapter for 2-wire duty
incl. potentiometer for
speed adjustment



Options / Accessories

29011932 **Adapter for BLDC motor**
4-2 wire w/ manual speed control
12 V DC “red”

29011933 **Adapter for BLDC motor**
4-2 wire w/ manual speed control
24 V DC “black”



96311001 **Hose barb connectors for M5 female thread**
2x connectors / 2x O-rings

PUMP AND COMPRESSOR SOLUTIONS FOR OEMS WORLDWIDE

thomaspumps.com



Gardner Denver Thomas GmbH

Livry-Gargan-Str. 10
82256 Fürstenfeldbruck
Germany
T +49 8141 2280 0
F +49 8141 8892136
thomas.de@irco.com

Gardner Denver Thomas. Inc.

1419 Illinois Avenue
Sheboygan. WI 53081
USA
T +1 920 4574891
F +1 920 4514276
td.usa@irco.com

Gardner Denver Thomas Pneumatic Systems (Wuxi) Co., Ltd.

No. 1 New Dong An Road, Shuofang Town, Wuxi, Xinwu District
Jiangsu 214142
China
T +86 510 6878 2258
F +86 510 6878 2200
thomas.cn@irco.com



The information presented in this material is based on technical data and test results of nominal units. It is believed to be accurate and reliable and is offered as an aid to help in the selection of Thomas products. It is the responsibility of the user to determine the suitability of the product for the intended use and the user assumes all risk and liability in connection therewith. Thomas does not warrant, guarantee or assume any obligation or liability in connection with this information.

Models presented in this catalog are representative of the product family. Photos of products pictured in this catalog do not necessarily represent a specific model number. To obtain further information for custom options, contact your local Thomas office.

Printed in Germany Form No. 17006311 05/2024 © Gardner Denver Thomas GmbH. All rights reserved.