



**603287DOC - Manual for ZZ603287 Controller Accessory**

# **Operating Manual**

---

## Table of Contents

<b>1. Introduction</b> .....	<b>3</b>
<b>2. Features</b> .....	<b>4</b>
<b>3. Specification</b> .....	<b>5</b>
<b>4. Connections (I/O)</b> .....	<b>6</b>
4.1 Pinout – Terminal Identification.....	6
4.2 Connectors .....	6
4.3 Matting Connectors.....	6
4.4 Mounting Instructions.....	7

## 1. Introduction

---

The ZZ603287 Controller Accessory is designed to work with the ZB603288W to provide a PWM signal for testing purposes in a lab setting. The unit will slide onto headers J3 and J2 of the ZB603288W and can be easily attached or removed. Unit is intended as a sales tool for lab use only to allow easy testing of a system without need for an external PWM signal.

## 2. Features

---

- Provides PWM signal to parent board
- Designed to function with ZB603288W

### 3. Specification

---

Parameter	Min	Typ.	Max	Units	Notes
Functional Voltage	3.0	3.3	3.6	VDC	
Speed Control PWM Range	5%		95%	% duty Cycle	At 23kHz signal frequency
PWM Frequency	20	23	26	kHz	Output frequency
Operating Ambient Temperature	10	25	45	C	Non- Condensing

Table 1 – Specification

## 4. Connections (I/O)

### 4.1 Pinout – Terminal Identification

See diagram in 4.2 for connector location

Connector Type	Function	Location	Notes
PWM SPEED CONTROL INPUT	NOT USED	J1-1	Connected to TP1
	GROUND (REF)	J1-2	
	PWM OUTPUT	J1-3	3.3V output
	TACH OUT	J1-4	Connected to TP2
	POWER IN	J1-5	3.3V input
JUMPER POSITION	PWM CONTROL	J2-1 and J2-2	Connects jumper pin 1 to pin 2 on parent board
	UNUSED	J2-3	Unused pin, for board support only.

Table 2 – Pinout

### 4.2 Connectors

See pinout in 4.1 for individual pin use.

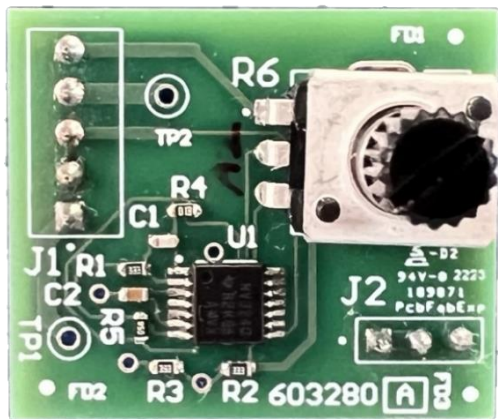


Figure 1 – Connector locations

### 4.3 Matting Connectors

Connector Designator	Connector MFG	Connector P/N	Notes
J1	Sullins	PPPC051LFBN-RC	Mates to J3 on parent board
J2	Sullins	PPPC031LFBN-RC	Mates to J1 on parent board

Table 3 – Matting Connectors

## 4.4 Mounting Instructions

To connect the ZZ603287 to the parent board, remove the jumper from J2. See Figure 2. With the connector removed, attach the board to the connectors. It is designed to easily slip onto J2 and J3 on the ZB603288W. Note: There are no latching functions on the connector.

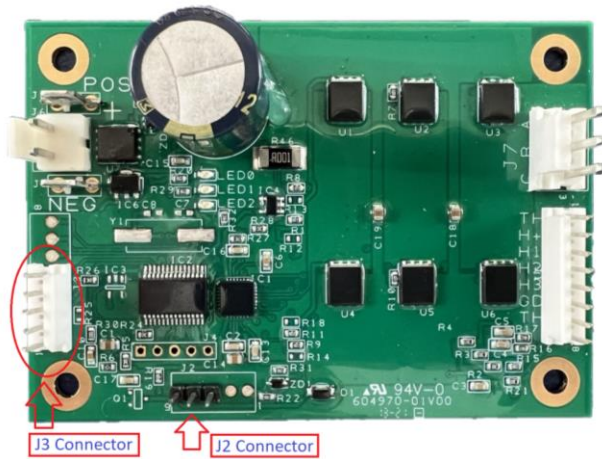


Figure 2 – Parent board ZB603288W without ZZ603287



Figure 3 – Parent board ZB603288W with ZZ603287 connected