

## FEATURES

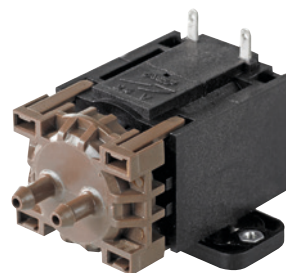
- > Oil-free
- > Maintenance free
- > Very low current consumption
- > Recommended for continuous operation
- > Compact design
- > Long lifetime
- > Very low noise

## TYPICAL APPLICATIONS

- > Industry
- > Medical devices
- > Analytical instrumentation
- > Laboratory technology

## BASE MODEL

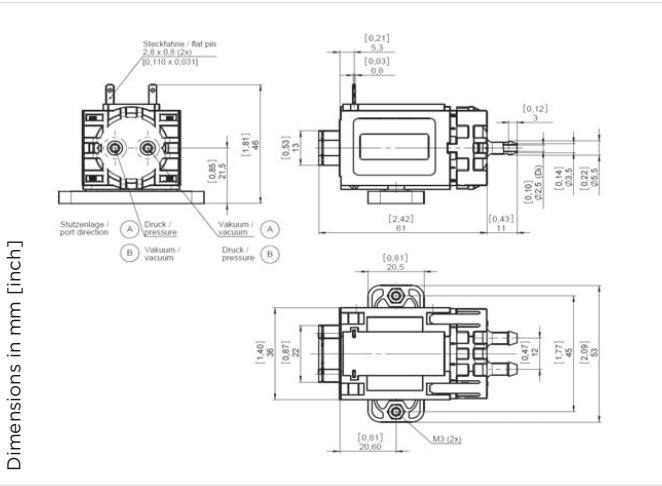
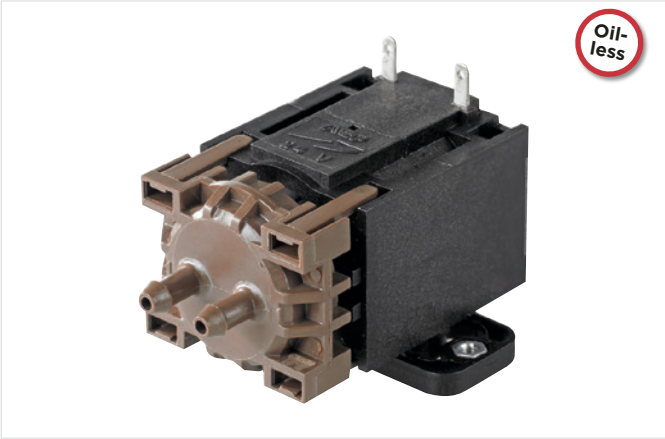
LMG 4



Diaphragm

# Linear Diaphragm Pump LMG 4

Flow at rated pressure 1000 ml/min



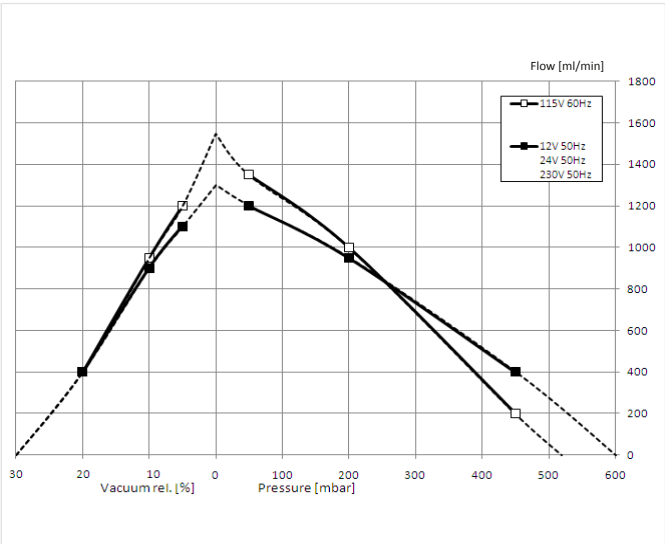
PNEUMATIC DATA				
Description	LMG-4-230V-50Hz	LMG-4-115V-60Hz	LMG-4-24V-50Hz	LMG-4-12V-50Hz
Part number	9340310	9341310	9343310	9344310
Flow at rated pressure	950 ml/min	1000 ml/min	950 ml/min	950 ml/min
Rated pressure	200 mbar	200 mbar	200 mbar	200 mbar
Operating pressure range	50 to 450 mbar	50 to 450 mbar	50 to 450 mbar	50 to 450 mbar
Flow at rated vacuum	900 ml/min	950 ml/min	900 ml/min	900 ml/min
Rated vacuum	10 %	10 %	10 %	10 %
Operating vacuum range	5 to 20 %	5 to 20 %	5 to 20 %	5 to 20 %

ELECTRICAL DATA				
Motor type	Linear drive	Linear drive	Linear drive	Linear drive
Nominal voltage	230 V AC	115 V AC	24 V AC	12 V AC
Nominal frequency	50 Hz*	60 Hz*	50 Hz*	50 Hz*
Max. Consumption	35 mA / 4.7 W	65 mA / 4.2 W	300 mA / 4.0 W	630 mA / 4.2 W
Consumption at rated pressure	33 mA / 4.5 W	60 mA / 4 W	280 mA / 3.8 W	590 mA / 4.0 W

GENERAL DATA				
Ambient temperature	0 to 50°C	0 to 50°C	0 to 50°C	0 to 50°C
Media temperature	0 to 50°C	0 to 50°C	0 to 50°C	0 to 50°C
Weight	160 g	160 g	160 g	160 g
Port direction	A	A	A	A

\* operation at other frequencies is possible but with impact on performance and pump life

## FLOW CURVES



## WETTED PARTS

Nozzle plate	PPS (Ryton*)
Pump chamber	PP
Diaphragm	EPDM
Valves	EPDM

## Notes

PUMP AND COMPRESSOR SOLUTIONS FOR OEMS WORLDWIDE

[thomaspumps.com](https://thomaspumps.com)



**Gardner Denver Thomas GmbH**

Livry-Gargan-Str. 10  
82256 Fürstenfeldbruck  
Germany  
T +49 8141 2280 0  
F +49 8141 8892136  
[thomas.de@irco.com](mailto:thomas.de@irco.com)

**Gardner Denver Thomas. Inc.**

1419 Illinois Avenue  
Sheboygan. WI 53081  
USA  
T +1 920 4574891  
F +1 920 4514276  
[td.usa@irco.com](mailto:td.usa@irco.com)

**Gardner Denver Thomas Pneumatic Systems (Wuxi) Co., Ltd.**

No. 1 New Dong An Road, Shuofang Town, Wuxi, Xinwu District  
Jiangsu 214142  
China  
T +86 510 6878 2258  
F +86 510 6878 2200  
[thomas.cn@irco.com](mailto:thomas.cn@irco.com)



The information presented in this material is based on technical data and test results of nominal units. It is believed to be accurate and reliable and is offered as an aid to help in the selection of Thomas products. It is the responsibility of the user to determine the suitability of the product for the intended use and the user assumes all risk and liability in connection therewith. Thomas does not warrant, guarantee or assume any obligation or liability in connection with this information.

Models presented in this catalog are representative of the product family. Photos of products pictured in this catalog do not necessarily represent a specific model number. To obtain further information for custom options, contact your local Thomas office.

Printed in Germany Form No. LMG4 07/2024 © Gardner Denver Thomas GmbH. All rights reserved.