

TA Series - DC or AC Voltage, 1/4 to 1.0 HP

THOMAS
by Gardner Denver

FEATURES

- > Oil-less design
- > Permanently lubricated and sealed bearings
- > Cast iron cylinders
- > PTFE piston rings and skirts
- > Long service free life
- > Field service capability
- > Totally enclosed motor
- > Low vibration
- > Quiet operation
- > Low profile

Declaration documentation available upon request

TYPICAL APPLICATIONS

- > Air Suspension
- > Central Tire Inflation
- > Defense Equipment Manufacturing
- > Fire Suppression Systems
- > Kneeler Suspension Systems
- > Load Leveling Air Suspension Systems
- > Pneumatic Doors
- > Wheel Flange Lubrication



BASE MODELS

DC Voltage

TA-3101-DC (270024)

(12V DC)

TA-4101-DC (270025)

(12V DC)

TA-4102-DC (270047)

(24V DC)

TA-5102-DC (270058)

(12V DC)

AC Voltage

TA-3051 (270002)

(115/230/60/1)

TA-3101 (270005)

(115/230/60/1)

TA-4101 (270015)

(115/230/60/1)

TA-4102 (270010)

(115/230/60/1)

TA-4172 (270072)

(115/230/60/1)

TA-5102 (270011)

(115/230/60/1)

TA-5102 (270040)

(110/220-240/50/1)

TA-5102 (270043)

(190/380/50/3 & 208-230/460/60/3)

TA-5172 (270073)

(115/230/60/1)

TA-5172 (270078)

(110/220-240/50/1)

TA-6102 (270012)

(115/230/60/1)

TA-6102 (270044)

(190/380/50/3 & 208-230/460/60/3)

TA-6172 (270080)

(115/230/60/1)

TA-6172 (270082)

190/380/50/3 & 208-230/460/60/3)

TA-7102 (270045)

(115/230/60/1)



Articulated Piston

TA Series - DC

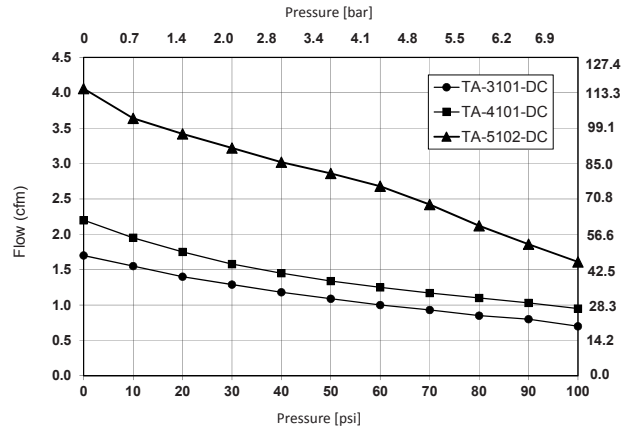
Flow	Up to 4.0 cfm (113.2 l/min)
Max. pressure	Up to 100 psig (6.9 bar)
Max. vacuum	N/A



TA-3101-DC
TA-4101-DC



TA-5102-DC



NOTE: All test values are nominal and for reference only. They are not guaranteed maximum or minimum limits, nor do they imply mean or median.

PERFORMANCE DATA

Model number	TA-3101-DC	TA-4101-DC	TA-4101-DC	TA-5102-DC
Manufacturing code	270024	270025	270047	270058
Number of cylinders	1	1	1	2
Nominal voltage input	12V DC	12V DC	24V DC	12V DC
Max. open air flow	1.70 cfm (48.1 l/min)	2.20 cfm (62.2 l/min)	2.20 cfm (62.2 l/min)	4.00 cfm (115.0 l/min)
Max. rated pressure	100 psi (7.0 bar)	100 psi (7.0 bar)	100 psi (6.9 bar)	100 psi (6.9 bar)
Current at rated pressure	26.0A	28.0A	18.5A	45.0A
Power at rated pressure	330W	340W	440W	540W
Max. pressure restart	100 psi (6.9 bar)	100 psi (6.9 bar)	100 psi (7.0 bar)	100 psi (7.0 bar)
Max. vacuum	N/A	N/A	N/A	N/A
Max. vacuum restart	N/A	N/A	N/A	N/A

ELECTRICAL DATA

Motor type	Permanent Magnet	Permanent Magnet	Permanent Magnet	Permanent Magnet
Motor locked rotor current	156A	198A	122A	230A
Thermal Protector	No	No	No	No
Capacitor Value	N/A	N/A	N/A	N/A
Horsepower	1/4	1/3	1/3	1/2

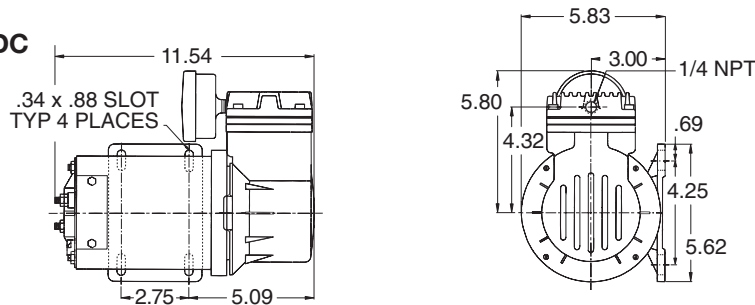
GENERAL DATA

Operating ambient temperature	32°F to 104°F (0°C TO 40°C)	32°F to 104°F (0°C TO 40°C)	32°F to 104°F (0°C TO 40°C)	32°F to 104°F (0°C TO 40°C)
Net weight	22 lbs (10.0 kg)	22 lbs (10.0 kg)	25 lbs (11.3 kg)	40 lbs (18.1 kg)

PRODUCT DIMENSIONS

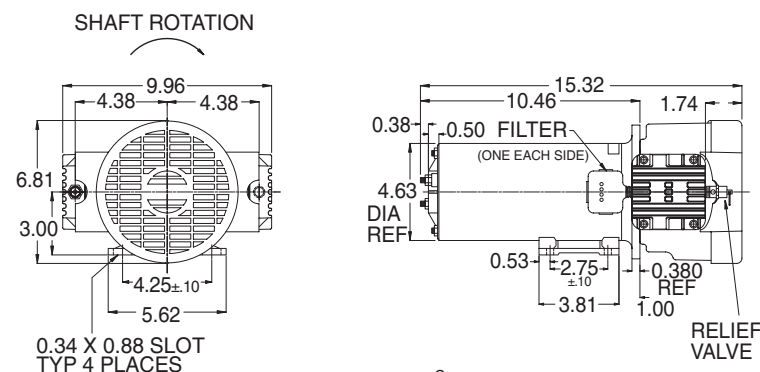
TA-3101-DC, TA-4101-DC

270024, 270025 & 270047



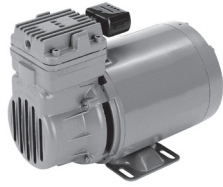
TA-5102

270058



TA Series - AC

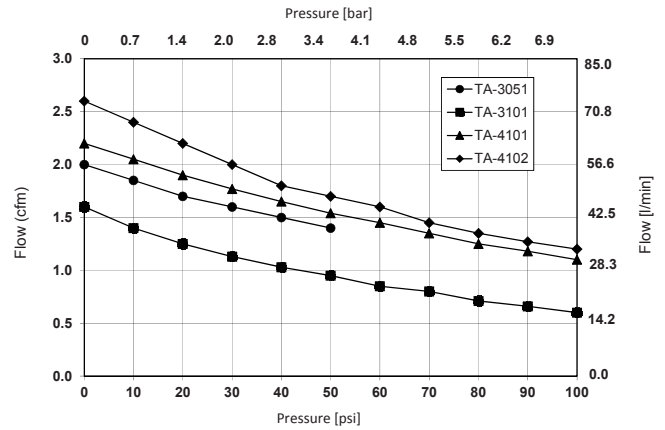
Flow	Up to 2.6 cfm (73.6 l/min)
Max. pressure	Up to 100 psig (6.9 bar)
Max. vacuum	N/A



TA-3051
TA-3101
TA-4101



TA-4102



TA Series Flow at Pressure Curve

NOTE: All test values are nominal and for reference only. They are not guaranteed maximum or minimum limits, nor do they imply mean or median.

PERFORMANCE DATA

Model number	TA-3051	TA-3101	TA-4101	TA-4102
Manufacturing code	270002	270005	270015	270010
Number of cylinders	1	1	1	2
Nominal voltage input	115/230/60/1	115/230/60/1	115/230/60/1	115/230/60/1
Max. open air flow	2.0 cfm (56.6 l/min)	1.60 cfm (45.3 l/min)	2.20 cfm (62.2 l/min)	2.60 cfm (73.6 l/min)
Max. rated pressure	50 psi (3.4 bar)	100 psi (6.9 bar)	100 psi (6.9 bar)	100 psi (6.9 bar)
Current at rated pressure	5.0/2.5A	5.0/2.5A	3.5/3.5A	8.0/4.0A
Power at rated pressure	350W	350W	430W	450W
Max. pressure restart	50 psi (3.4 bar)	100 psi (6.9 bar)	100 psi (6.9 bar)	100 psi (6.9 bar)
Max. vacuum	N/A	N/A	N/A	N/A
Max. vacuum restart	N/A	N/A	N/A	N/A

ELECTRICAL DATA

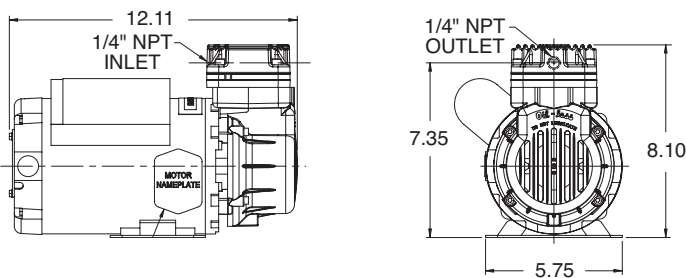
Motor type	Capacitor Start	Capacitor Start	Capacitor Start/Run	Capacitor Start
Motor locked rotor current	23.2/11.9A	23.3/11.9A	23.2A	34.8/18.0A
Thermal Protector	Yes	Yes	Yes	Yes
Capacitor Value	270 mfd	270 mfd	243mfd/20mfd	243 mfd
Horsepower	1/4	1/4	1/3	1/3

GENERAL DATA

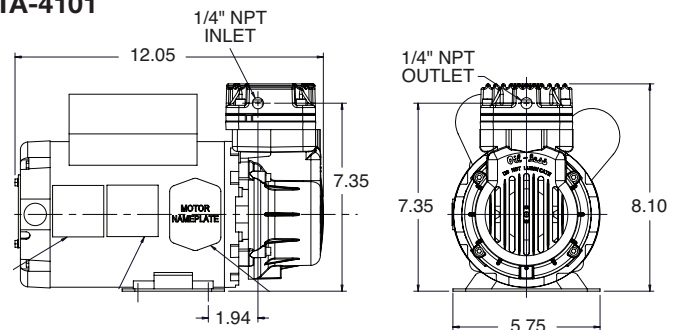
Operating ambient temperature	32°F to 104°F (0°C TO 40°C)	32°F to 104°F (0°C TO 40°C)	32°F to 104°F (0°C TO 40°C)	32°F to 104°F (0°C TO 40°C)
Net weight	21 lbs (9.5 kg)	21 lbs (9.5 kg)	24 lbs (10.9 kg)	36 lbs (16.3 kg)

PRODUCT DIMENSIONS

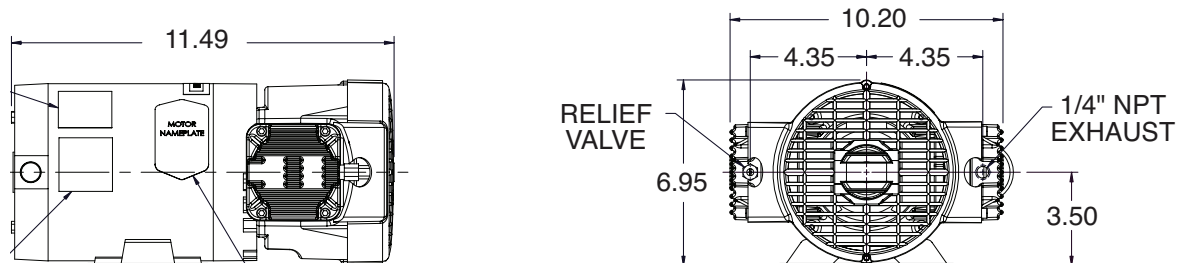
TA-3051, TA3101



TA-4101



TA-4102

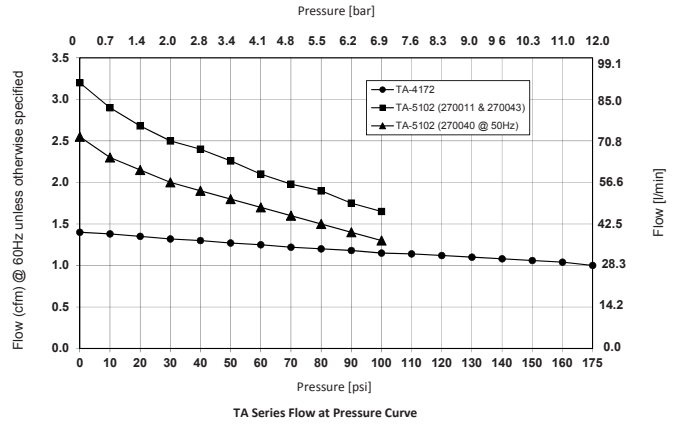


TA Series - AC

Flow	Up to 3.2 cfm (90.6 l/min)
Max. pressure	Up to 175 psig (12.0 bar)
Max. vacuum	N/A



TA-4172
TA-5102



NOTE: All test values are nominal and for reference only. They are not guaranteed maximum or minimum limits, nor do they imply mean or median.

PERFORMANCE DATA

Model number	TA-4172	TA-5102	TA-5102	TA-5102
Manufacturing code	270072	270011	270040	270043
Number of cylinders	2	2	2	2
Nominal voltage input	115/230/60/1	115/230/60/1	110/220-240/50/1	190/380/50/3 208-230/460/60/3
Max. open air flow	1.40 cfm (39.6 l/min)	3.20 cfm (90.6 l/min)	2.55 cfm (72.2 l/min)	3.20 cfm (90.6 l/min)
Max. rated pressure	175 psi (12.0 bar)	100 psi (6.9 bar)	100 psi (6.9 bar)	100 psi (6.9 bar)
Current at rated pressure	8.0/4.0A	7.2/3.6A	8.2/4.3A	2.0/0.95A
Power at rated pressure	450W	760W	670W	628W
Max. pressure restart	175 psi (12.0 bar)	100 psi (6.9 bar)	100 psi (6.9 bar)	100 psi (6.9 bar)
Max. vacuum	N/A	N/A	N/A	N/A
Max. vacuum restart	N/A	N/A	N/A	N/A

ELECTRICAL DATA

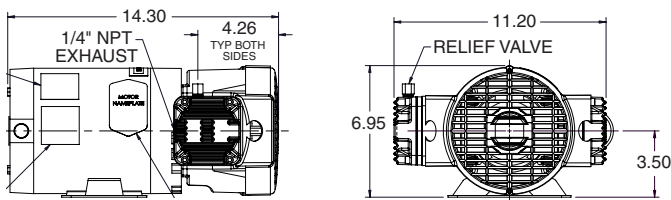
Motor type	Capacitor Start	Capacitor Start	Capacitor Start	Polyphase
Motor locked rotor current	34.8/18.0A	37.0/19.7A	39.0/19.5A	12.5/6.0A
Thermal Protector	Yes	Yes	Yes	No
Capacitor Value	243 mfd	324 mfd	324 mfd	N/A
Horsepower	1/3	1/2	1/2	1/2

GENERAL DATA

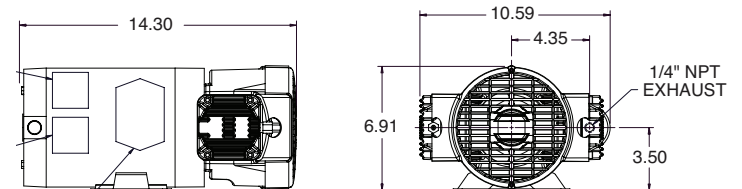
Operating ambient temperature	32°F to 104°F (0°C TO 40°C)	32°F to 104°F (0°C TO 40°C)	32°F to 104°F (0°C TO 40°C)	32°F to 104°F (0°C TO 40°C)
Net weight	45 lbs (20.4 kg)	37 lbs (16.8 kg)	37 lbs (16.8 kg)	37 lbs (16.8 kg)

PRODUCT DIMENSIONS

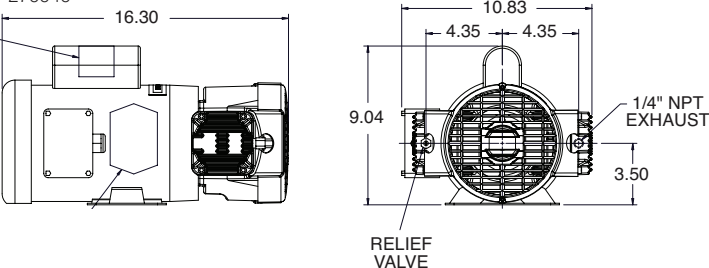
TA-4172
270072



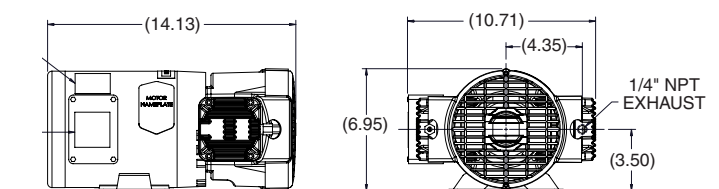
TA-5102
270011



TA-5102
270040

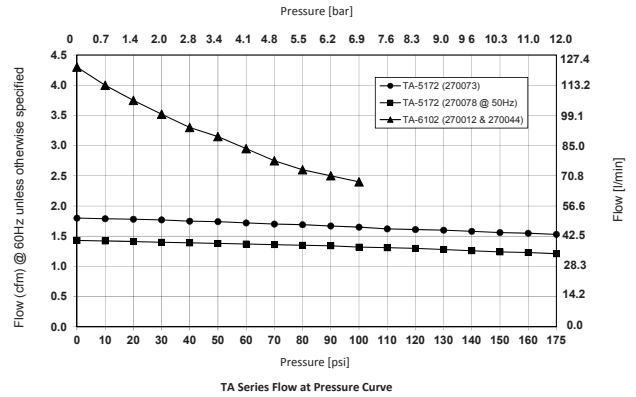
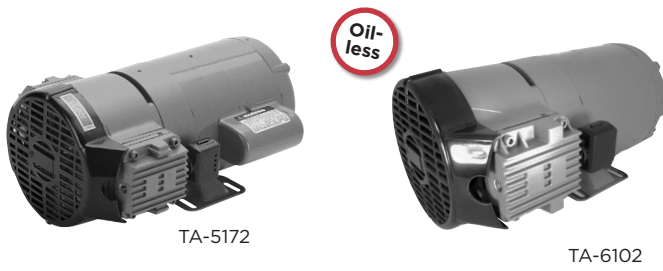


TA-5102
270043



TA Series - AC

Flow	Up to 4.3 cfm (121.7 l/min)
Max. pressure	Up to 175 psig (12.0 bar)
Max. vacuum	N/A



NOTE: All test values are nominal and for reference only. They are not guaranteed maximum or minimum limits, nor do they imply mean or median.

PERFORMANCE DATA

Model number	TA-5172	TA-5172	TA-6102	TA-6102
Manufacturing code	270073	270078	270012	270044
Number of cylinders	2	2	2	2
Nominal voltage input	115/230/60/1	110/220-240/50/1	115/230/60/1	190/380/50/3 208-230/460/3
Max. open air flow	1.80 cfm (50.9 l/min)	1.43 cfm (40.4 l/min)	4.30 cfm (121.7 l/min)	4.30 cfm (121.7 l/min)
Max. rated pressure	175 psi (12.0 bar)	175 psi (12.0 bar)	100 psi (6.9 bar)	100 psi (6.9 bar)
Current at rated pressure	7.3/3.6A	8.2/4.3A	10.6/5.3A	2.8/1.4A
Power at rated pressure	760W	670W	825W	800W
Max. pressure restart	175 psi (12.0 bar)	175 psi (12.0 bar)	100 psi (6.9 bar)	100 psi (6.9 bar)
Max. vacuum	N/A	N/A	N/A	N/A
Max. vacuum restart	N/A	N/A	N/A	N/A

ELECTRICAL DATA

Motor type	Capacitor Start	Capacitor Start	Capacitor Start	Polyphase
Motor locked rotor current	34.8/18.0A	39.0/19.5A	60.0/30.0A	17.0/8.5A
Thermal Protector	Yes	Yes	Yes	No
Capacitor Value	324 mfd	324 mfd	378 mfd	N/A
Horsepower	1/2	1/2	3/4	3/4

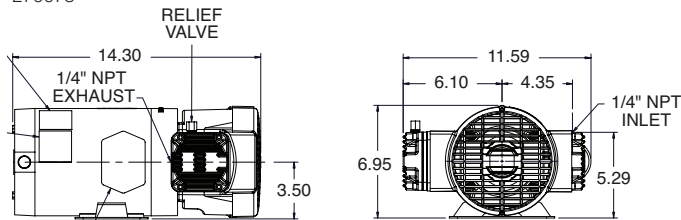
GENERAL DATA

Operating ambient temperature	32°F to 104°F (0°C TO 40°C)	32°F to 104°F (0°C TO 40°C)	32°F to 104°F (0°C TO 40°C)	32°F to 104°F (0°C TO 40°C)
Net weight	51 lbs (23.1 kg)	51 lbs (23.1 kg)	45 lbs (20.4 kg)	45 lbs (20.4 kg)

PRODUCT DIMENSIONS

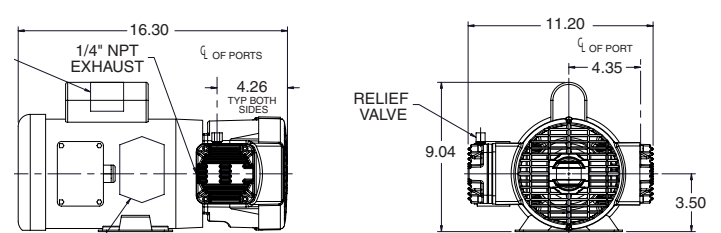
TA-5172

270073



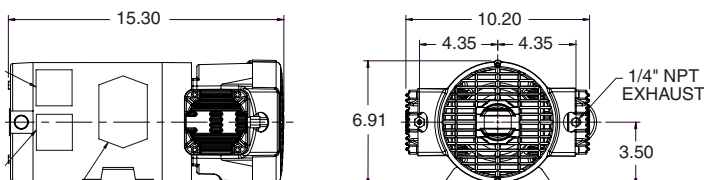
TA-5172

270078



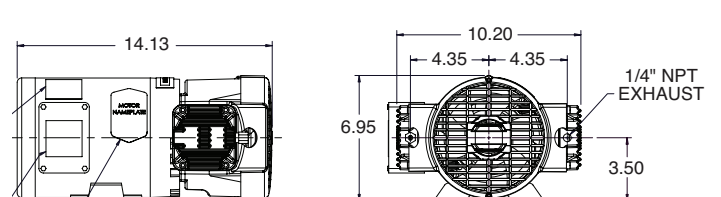
TA-6102

270012



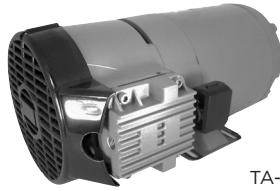
TA-6102

270044

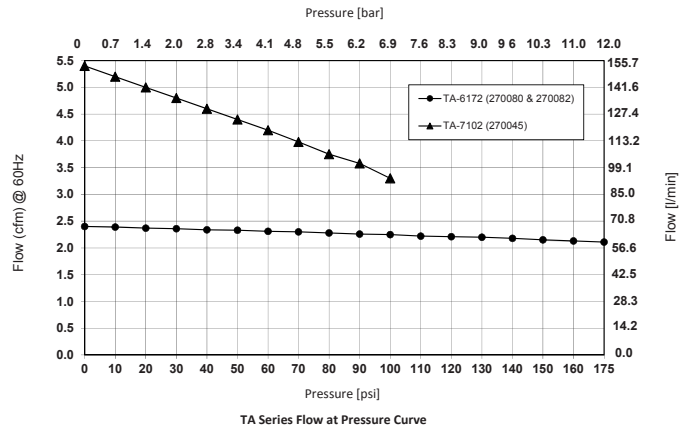


TA Series - AC

Flow	Up to 5.4 cfm (152.9 l/min)
Max. pressure	Up to 175 psig (12.0 bar)
Max. vacuum	N/A



TA-6172
TA-7102



NOTE: All test values are nominal and for reference only. They are not guaranteed maximum or minimum limits, nor do they imply mean or median.

PERFORMANCE DATA

Model number	TA-6172	TA-6172	TA-7102
Manufacturing code	270080	270082	270045
Number of cylinders	2	2	2
Nominal voltage input	115/230/60/1	190/380/50/3 208-230/460/60/3	115/230/60/1
Max. open air flow	2.40 cfm (67.9 l/min)	2.40 cfm (67.9 l/min)	5.40 cfm (152.9 l/min)
Max. rated pressure	175 psi (12.0 bar)	175 psi (12.0 bar)	100 psi (6.9 bar)
Current at rated pressure	10.6/5.3A	2.8/1.4A	12.0/8.0A
Power at rated pressure	825W	800W	1625W
Max. pressure restart	175 psi (12.0 bar)	175 psi (12.0 bar)	100 psi (6.9 bar)
Max. vacuum	N/A	N/A	N/A
Max. vacuum restart	N/A	N/A	N/A

ELECTRICAL DATA

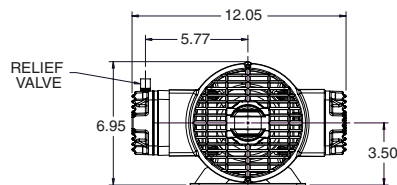
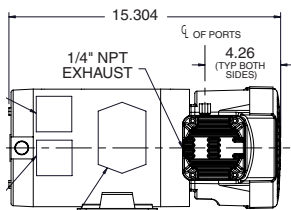
Motor type	Capacitor Start	Polyphase	Capacitor Start/Run
Motor locked rotor current	60.0/30.0A	17.0/8.5A	65.0/33.0A
Thermal Protector	Yes	No	Yes
Capacitor Value	378 mfd	N/A	400/20 mfd
Horsepower	3/4	3/4	1.0

GENERAL DATA

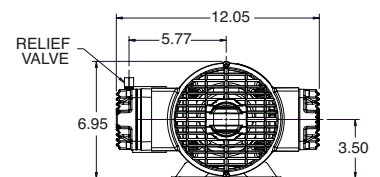
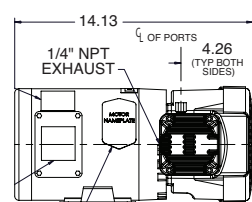
Operating ambient temperature	32°F to 104°F (0°C TO 40°C)	32°F to 104°F (0°C TO 40°C)	32°F to 104°F (0°C TO 40°C)
Net weight	56 lbs (25.4 kg)	56 lbs (25.4 kg)	61 lbs (27.7 kg)

PRODUCT DIMENSIONS

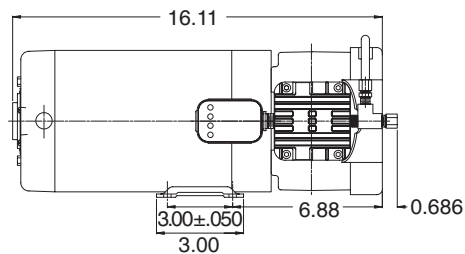
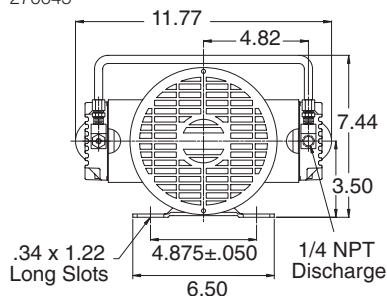
TA-6172
270080



TA-6172
270082



TA-7102
270045



PUMP AND COMPRESSOR SOLUTIONS FOR OEMS WORLDWIDE

gd-thomas.com



Gardner Denver Thomas GmbH

Livry-Gargan-Str. 10
82256 Fürstfeldbruck
Germany

T +49 8141 2280 0
F +49 8141 8892136

thomas.de@gardnerdenver.com

Gardner Denver Thomas Pneumatic Systems (Wuxi) Co. Ltd.

1 New Dong'an Road, Shuofang Town
Xinwu District, Wuxi
Jiangsu, 214142 China

T +86 510 6878 2258
F +86 510 6878 2200

thomas.cn@gardnerdenver.com

THOMAS
by Gardner Denver

Gardner Denver Thomas, Inc.

1419 Illinois Avenue
Sheboygan, WI 53081
USA

T +1 920 4574891
F +1 920 4514276

td.usa@gardnerdenver.com

The information presented in this material is based on technical data and test results of nominal units. It is believed to be accurate and reliable and is offered as an aid to help in the selection of Thomas products. It is the responsibility of the user to determine the suitability of the product for the intended use and the user assumes all risk and liability in connection there with. Thomas does not warrant, guarantee or assume any obligation or liability in connection with this information.

Models presented in this catalog are representative of the product family. Photos of products pictured in this catalog do not necessarily represent a specific model number. To obtain further information for custom options, contact your local Thomas office.

Printed in U.S.A Form No. 850-3519 05/2019 ©Gardner Denver Thomas, Inc. All rights reserved.